

THE BOROUGH OF STOCKTON- ON- TEES
A177 DURHAM ROAD, STOCKTON-ON-TEES
(TRAFFIC REGULATION) ORDER 2009

Notice is hereby given that Stockton-on-Tees Borough Council propose to make an Order under Sections 1, 2 and 4 and Part IV of Schedule 9 of the Road Traffic Regulation Act 1984 and of all other enabling powers, and after consultation with the Chief Officer of Police in accordance with Part III of Schedule 9 to the Act.

'The County of Cleveland (A177 Durham Road/Hardwick Road roundabout, Stockton-on-Tees) (Prohibition of Driving) Order 1976' shall be revoked in its entirety, thereby opening the existing left hand filter lane connecting the south side of Hardwick Road and the west side of A177 Durham Road to all traffic.

The Order will have the effect of:-

1. making it unlawful to cause or permit any vehicle, other than a Bus or Pedal Cycle, to proceed along, enter or be within the Bus Lanes on the roads or parts of the roads described in Schedule 1 hereto; and
2. making it unlawful to wait or load or unload on the lengths of road specified in Schedule 2 hereto.

Full details of the proposals are contained in the draft Order which, together with a map showing the affected road and a statement of the Council's reasons for proposing to make the Order, may be examined at the Municipal Buildings, Church Road, Stockton-on-Tees during normal office hours.

If you wish to object to the proposed Order you should send the grounds for your objection in writing to the undersigned by 10th December 2009.

SCHEDULE 1

With Flow Bus and Pedal Cycles Only Lane

A177 Durham Road, Stockton-on-Tees
(north east side).

From a point approximately 56 metres north west of its junction with Darlington Lane in a north westerly direction for a distance of approximately 160 metres.

From a point approximately 94 metres north west of its junction with Redhill Road in a north westerly direction for a distance of approximately 90 metres.

A177 Durham Road, Stockton-on-Tees
(south west side).

From a point approximately 83 metres south east of its junction with Hardwick Road in a south easterly direction for a distance of approximately 187 metres.

SCHEDULE 2

24 Hour Loading Restrictions and 24 Hour Waiting Restrictions

A177 Durham Road, Stockton-on-Tees
(north east side).

From a point approximately 56 metres north west of its junction with Darlington Lane in a north westerly direction for a distance of approximately 210 metres.

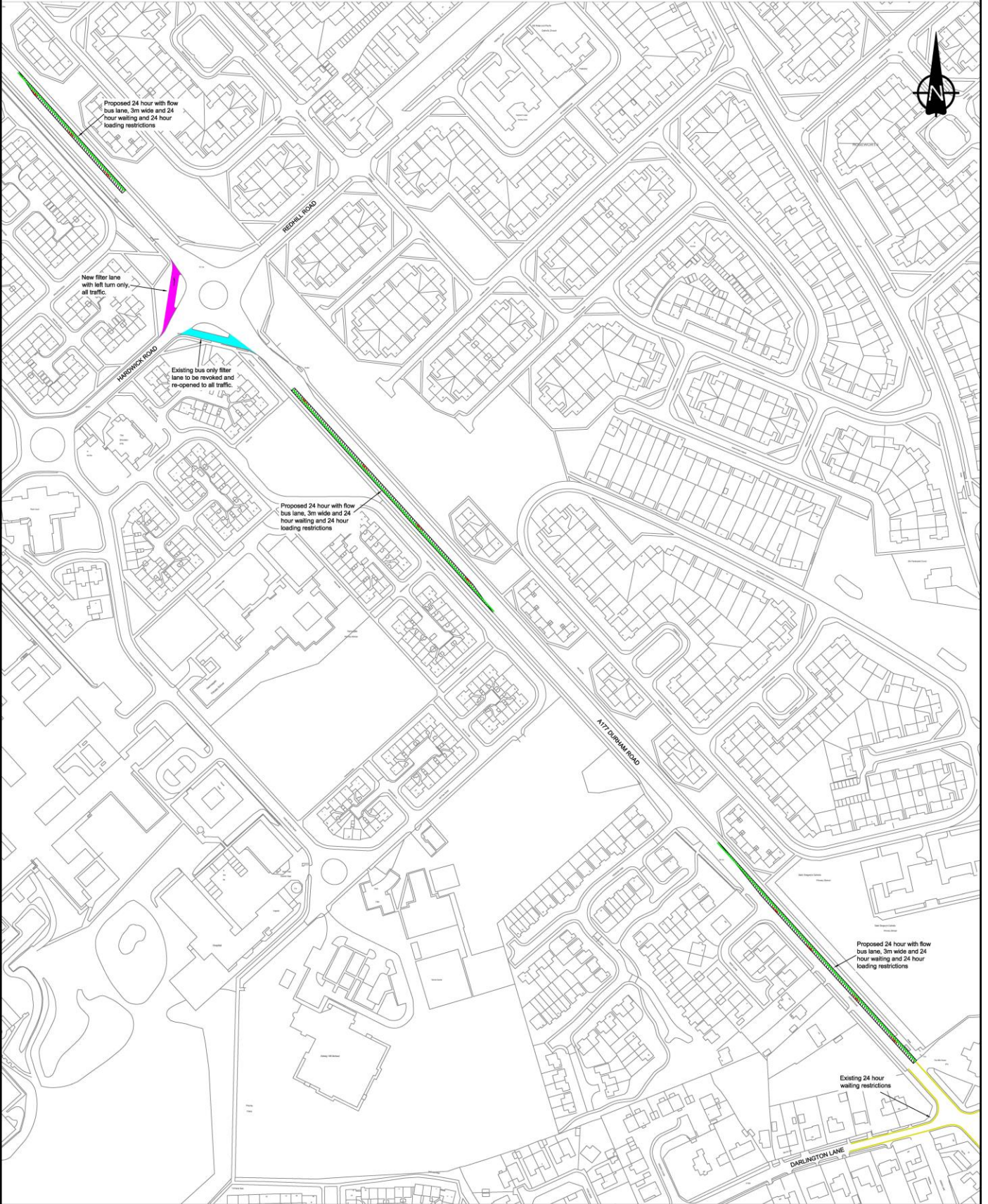
From a point approximately 94 metres north west of its junction with Redhill Road in a north westerly direction for a distance of approximately 120 metres.

A177 Durham Road, Stockton-on-Tees
(south west side).

From a point approximately 83 metres south east of its junction with Hardwick Road in a south easterly direction for a distance of approximately 217 metres.

Dated 19th day of November 2009.

D.E. Bond
Director of Law & Democracy
Municipal Buildings
Church Road
STOCKTON-ON-TEES
TS18 1LD



Rev	Description	Dim	Chk	Date
Drawing Status	PRELIMINARY <input type="checkbox"/> APPROVAL <input type="checkbox"/> INFORMATION <input checked="" type="checkbox"/> TENDER <input type="checkbox"/> CONTRACT <input type="checkbox"/>			
Stockton-on-Tees BOROUGH COUNCIL		Project: TEES VALLEY BUS NETWORK IMPROVEMENTS DURHAM ROAD, STOCKTON		
Development & Neighbourhood Services Head (Technical Services Division) Mike Robinson B.Sc., C.Eng., M.I.C.E. P.O. Box 229, Kingsway House, West Precinct, Bilbrough, TE33 2YL Telephone 01642 393030 E-mail: mgr.watson@stockton.gov.uk		Contract: PROPOSED BUS LANE TRAFFIC REGULATION ORDER		
Scale:	1:1250	Date:	SEPT '09	Drawn: GCF Checked: GS
				Job No.: TM2/93

This map is reproduced from Ordnance Survey material with the permission of Ordnance Survey on behalf of the Controller of Her Majesty's Stationery Office. © Crown Copyright. Unauthorised reproduction infringes Crown Copyright and may lead to prosecution or civil proceedings. Stockton-on-Tees Borough Council 100023297